

Company Profile

GENERAL CONTRACTOR

Project Design, Management and Execution.

Turnkey Projects.

General Construction, Roofing, Metal
Decking, Structures, Civil Work, Industrial
Equipment

TOTAL CONSTRUCTION SOLUTIONS



ALABAMA STATE LICENSED

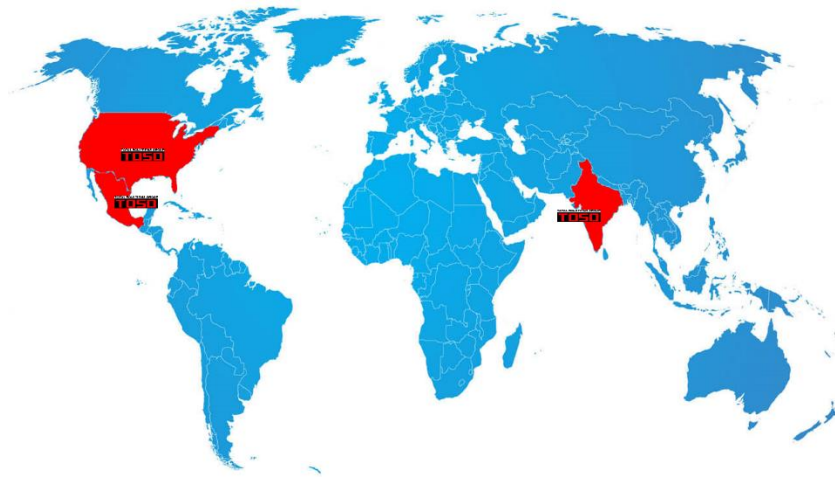
GENERAL CONTRACTOR



GEORGIA STATE LICENSED

GENERAL CONTRACTOR





Total Solutions Group, "TOSO", we are a transnational company with our headquarters in the city of Duluth, GA. USA, with more than 10 years of experience in the execution and development of construction projects, industrial and commercial. Roofing being our greatest strength.

Fully committed to projects of high volume and maximum quality in the concepts of supply and customer service, resulting in constant and satisfied customers.

Believing in the development of Mexico, TOSO opened it's subsidiary for this country in 2014, initially to fulfill contracts with Korean companies in various projects associated with the KIA assembly plant in the state of Nuevo León.

In TOSO we put at your disposal the effort, responsibility and skills of an excellent group of professionals and workers, committed to provide the highest quality, the highest safety and the best delivery times. We also make synergy with other companies and construction professionals to provide a comprehensive service to your requirements.

We have an International Authorized Installer Certification from the transnationals CARLISLE, FIRESTONE, GAF.

Let us show you that we are the

TOTAL SOLUTION

to your construction needs.



VALUES & PRINCIPLES

RESPONSIBILITY

PUNCTUALITY

LOYALTY

RESPECT

EQUALITY

EFFICIENCY

COMMITMENT

MISSION

Our mission is to create trusting relationships based on the principle of WIN-WIN with the commitment to offer practical and effective solutions to your construction needs by providing: High Quality, Excellent Services and Competitive Prices.

GOALS

All goals are designed for each particular project, but all have the same purpose in common, seeking the absolute satisfaction of our Clients through excellence.

VISION

Become a commercial ally in services and construction of large, medium and small companies, continuing with our growth and development. With expectations to expand our scope of action and venture into new projects that fill us with pride and satisfaction.



SATISFIED CUSTOMERS GUARANTEE US

Many international and local companies, place their trust in us for the realization of their projects.

Some of them are:

- KIRIN HAPPYRO
- HYUNDAI ENGINEERING LTD
- DAEHAN STEEL
- DONGHEE INDUSTRIES LTD
- CASAPIA ECS
- KIA MOTORS MEXICO
- HYUNDAI POWERTECH MEXICO
- HYUNDAI WIA
- KUMHO TIRE LTD
- WIA GLOVIS
- KODACO MKDC
- SMART Alabama LTD
- HYUNDAI MOBIS América
- DONGHEE America



SOME OF OUR SERVICES

TURNKEY PROJECTS:

- ✓ INDUSTRIAL
- ✓ COMMERCIAL
- ✓ INSTITUTIONAL
- ✓ RESIDENTIAL

PROJECT MANAGEMENT:

- Project Management and Administration
- Hiring of Coordinating and Supervisory Staff
- Coordination and Supervision of the Involved
- Administration and Review of Cash Flows
- Project Completion and Delivery
- Development of Design Projects
- Conceptual Engineering Approach
- Elaboration of Plans of All the Concepts of the Project

ROOFING

Industrial, commercial and residential, supply and installation of membrane, lamination and roof waterproofing systems, with a contract guarantee of our work for up to 15 years at the customer's request.

Supply and installation of insulated multi-panel in walls and ceilings.

- ✓ Flat roof
- ✓ TPO and EPDM systems
- ✓ Single ply
- ✓ Emergency repairs
- ✓ Shingles
- ✓ PVC
- ✓ Coatings



CIVIL CONSTRUCTION

- Geotechnical Studies
- Earthworks
- Foundations
- Industrial Floors
- Pavement
- Earth movement
- Metal Structures
- Masonry and Finishes

MECHANICAL INSTALLATIONS, ELECTRICAL, DATA.

- HVAC, Air Conditioning
- Hydrosanitary
- Systems against Fire
- Illumination
- Substations
- Low Voltage Force
- High Voltage Force
- Process Water
- Natural gas
- Compressed air

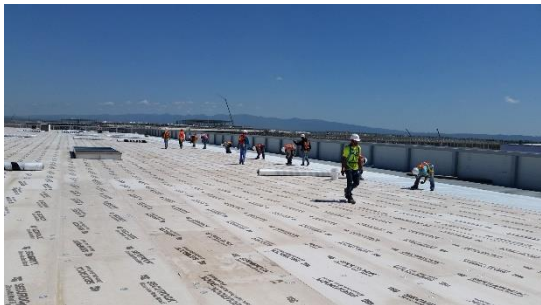


CIVIL WORKS - FOUNDATION EARTH WORK

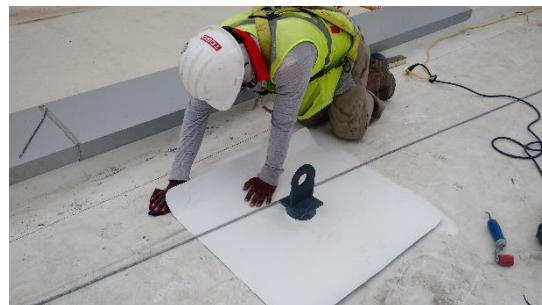
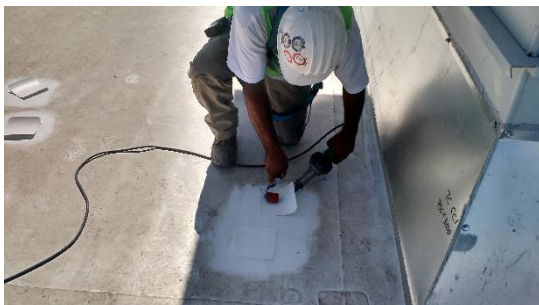




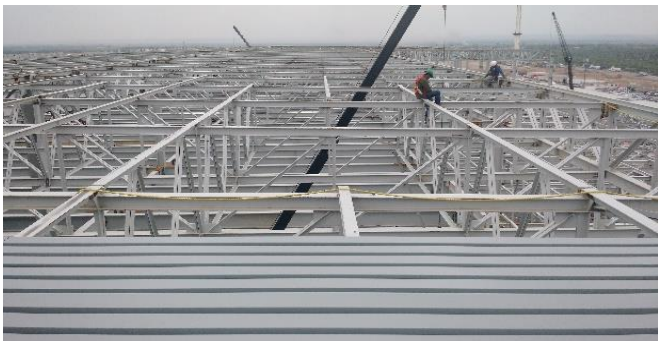
ROOFING
SUPPLY AND INSTALLATION OF WATERPROOFING SYSTEM



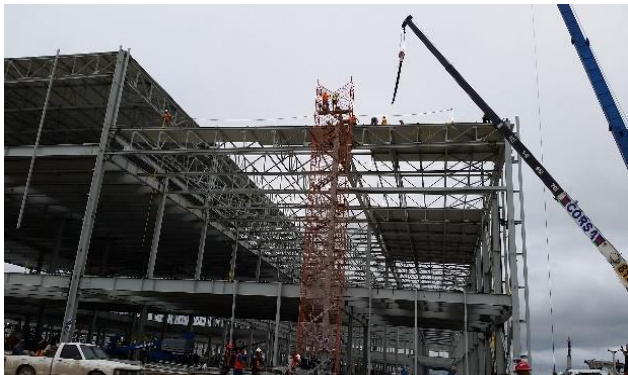
WATERPROOF INSTALLATION COVERING DUCTS



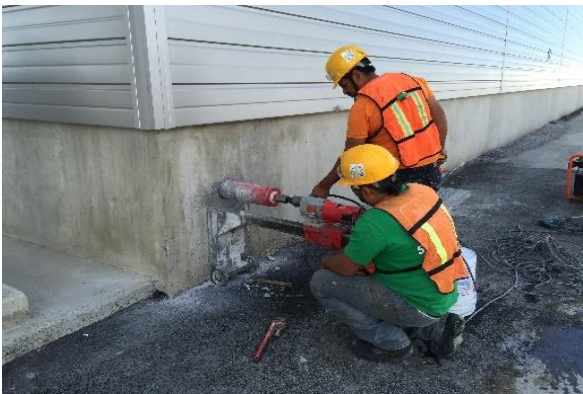
DECKING COVER INSTALLATION



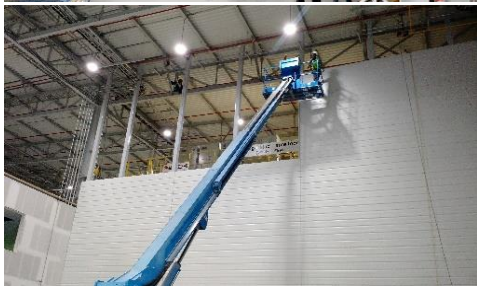
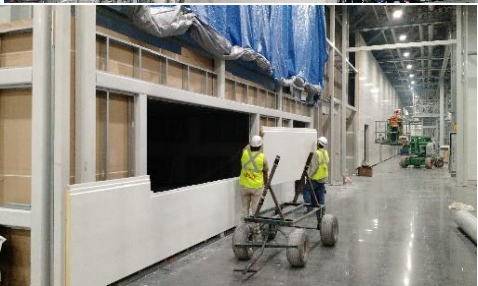
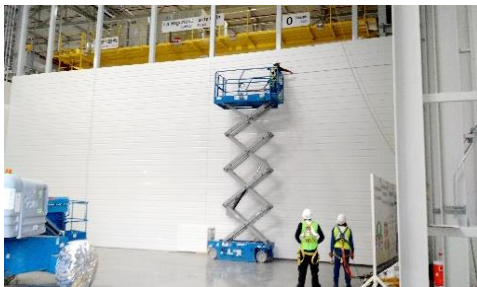
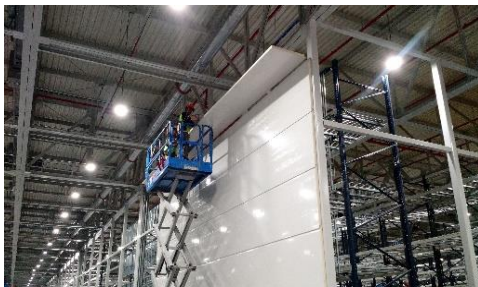
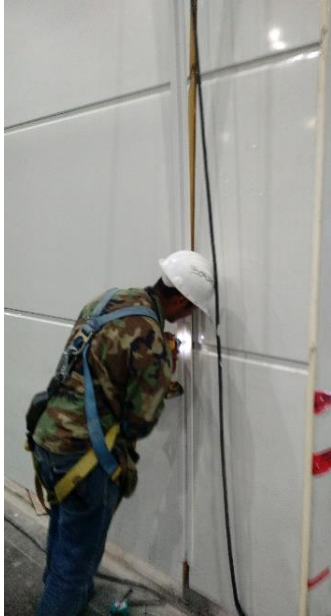
DECKING COVER INSTALLATION



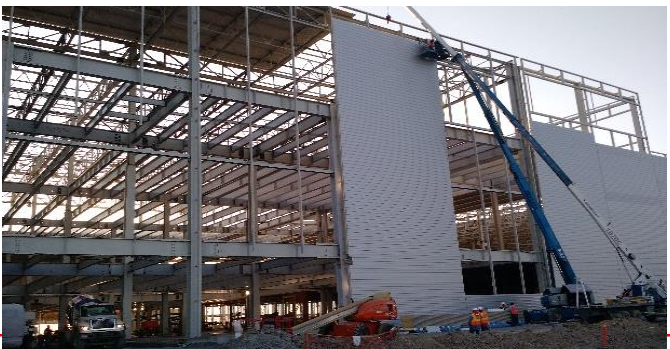
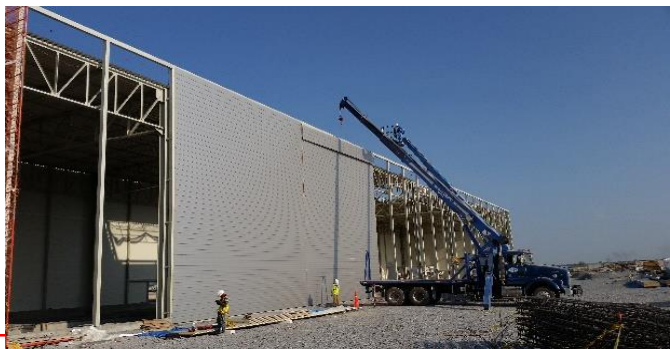
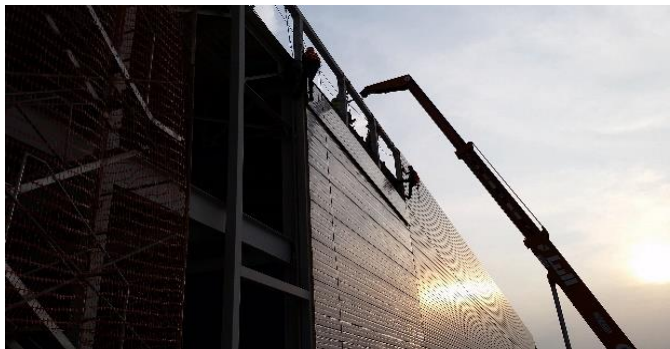
PLUVIAL DRAINAGES INSTALLATION



INSULATED MULTIPANEL INSTALLATION



INSULATED MULTIPANEL INSTALLATION



Duluth, GA / Valley, AL
Tel. +1 770-852-0330

Certified Installer



Monterrey, NL
Tel. +52 811-021-6167



SUPPLY AND ASSEMBLY OF HEAVY AND LIGHT STRUCTURES



MAINTENANCE AND CONDITIONING OF INDUSTRIAL BUILDING



SUPPLY OF INDUSTRIAL EQUIPMENT



INDUSTRIAL EQUIPMENT



PORTFOLIO

Projects Gallery



TOTAL SOLUTIONS GROUP

"Build your dreams with us"



Duluth, GA / Valley, AL
Tel. +1 770-852-0330

Certified Installer



Monterrey, NL
Tel. +52 811-021-6167





Hyundai MOBIS Alabama

Project

Module IP Building

Job Scope

Roofing Works:
Roof and accessories reconditioning.
TPO 60mils membrane replacement.

Location & Date

Montgomery AL, USA



DONGHEE America

Project

Donghee Kautex Plant

Job Scope

Industrial Facilities Maintenance: Access
doors, Wall panel repairs.

Location & Date

Auburn AL, USA





SMART Automotive

Project

Assembly Building

Job Scope

**Roofing Works:
Remove and replacement Insulation and
TPO Membrane System. (partial Roof)**

Location & Date

Louverne AL, USA



**Korean Community
Presbitharian Church**

Project

**Sanctuary, Community & Education
Buildings**



Job Scope



**Roofing Works:
Shingles Roof Replacement**

Location & Date

Duluth GA, USA



	Project	Georgia Plant
	Job Scope	Roofing Works: Supply and Installation Metal deck and Waterproofing Membrane System TPO.
	Location & Date	West Point GA, USA
 POWERTECH America		

	Project	Engine Shop Plant expansion
	Job Scope	Roofing Works: Decking, Insulation, TPO system membrane. Metal Substructure: Supply and assembly. Multi-panel installation on exterior and interior walls.
	Location & Date	Pesqueria NL, MEX
 Hyundai WIA		





MKDC Mexico

Project

New Plant Mexico

Job Scope

Roofing Works:

Decking, TPO membrane system. Supply and application of epoxy-urethane water-proofing coating of underground tanks. Multi-panel installation on exterior walls.

Location & Date

Saltillo CO, MEX



DONGHEE America

Project

Donghee Kautex Plant

Job Scope

Roofing Works:

Supply and Installation of Waterproofing Membrane System TPO.

Location & Date

Auburn AL, USA





DAE HAN Steel

Project

New Administrative Building

Job Scope

Turnkey project, construction of Building intended for offices. Project Management, Engineering, foundation, structure, roof, electrical systems, plumbing, data, floors and finishes.

Location & Date

Cienega de Flores NL, MEX



HANKOOK Tire USA

Project

AUSA Hankook Tire Plant

Job Scope

Roofing Works:
Supply and Installation Deck Metal Panel and Waterproofing Membrane System TPO. Waterproofing of equipment on the roof.

Location & Date

Macon GA, USA





HYUNDAI Wia

Project

Engine Shop New Plant

Job Scope

**Roofing Works:
Supply and Installation of Waterproofing
Membrane System TPO.**

Location & Date

Pesqueria NL, MEX



DAE HAN Steel

Project

Factory Plant

Job Scope

**Industrial warehouse Conditioning, floors,
walls and maintenance of structure. Supply
of industrial equipment.**

Location & Date

Cienega de Flores NL, MEX





**HYUNDAI
POWERTECH**

POWERTECH Mexico

Project

Transmission Shop New Plant

Job Scope

Roofing Works:
Decking, Thermal Insulation, TPO system membrane. Metal Substructure: Supply and assembly. Multi-panel installation on exterior and interior walls.

Location & Date

Pesqueria NL, MEX



KUHMO Tire USA

Project

Kuhmo Tire New Plant

Job Scope

Metal Substructure: Supply and assembly.
Multi-panel installation on exterior and interior walls.

Location & Date

Clarksville TN, USA



Duluth, GA / Valley, AL

Tel. +1 770-852-0330

Certified Installer



Monterrey, NL

Tel. +52 811-021-6167



		Project
		New Industrial Complex
		Job Scope
		Decking, Thermal Insulation, TPO system membrane. Metal Substructure: Supply and assembly. Multi-panel installation on exterior and interior walls.
Location & Date		Pesqueria NL, MEX
 KIA MOTOR MEXICO		

